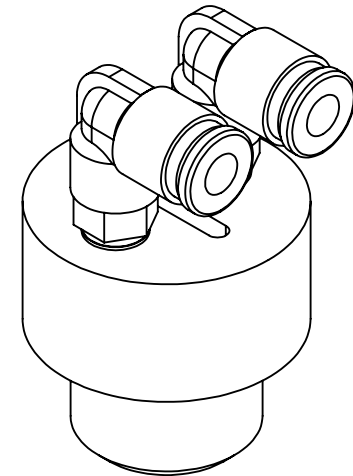
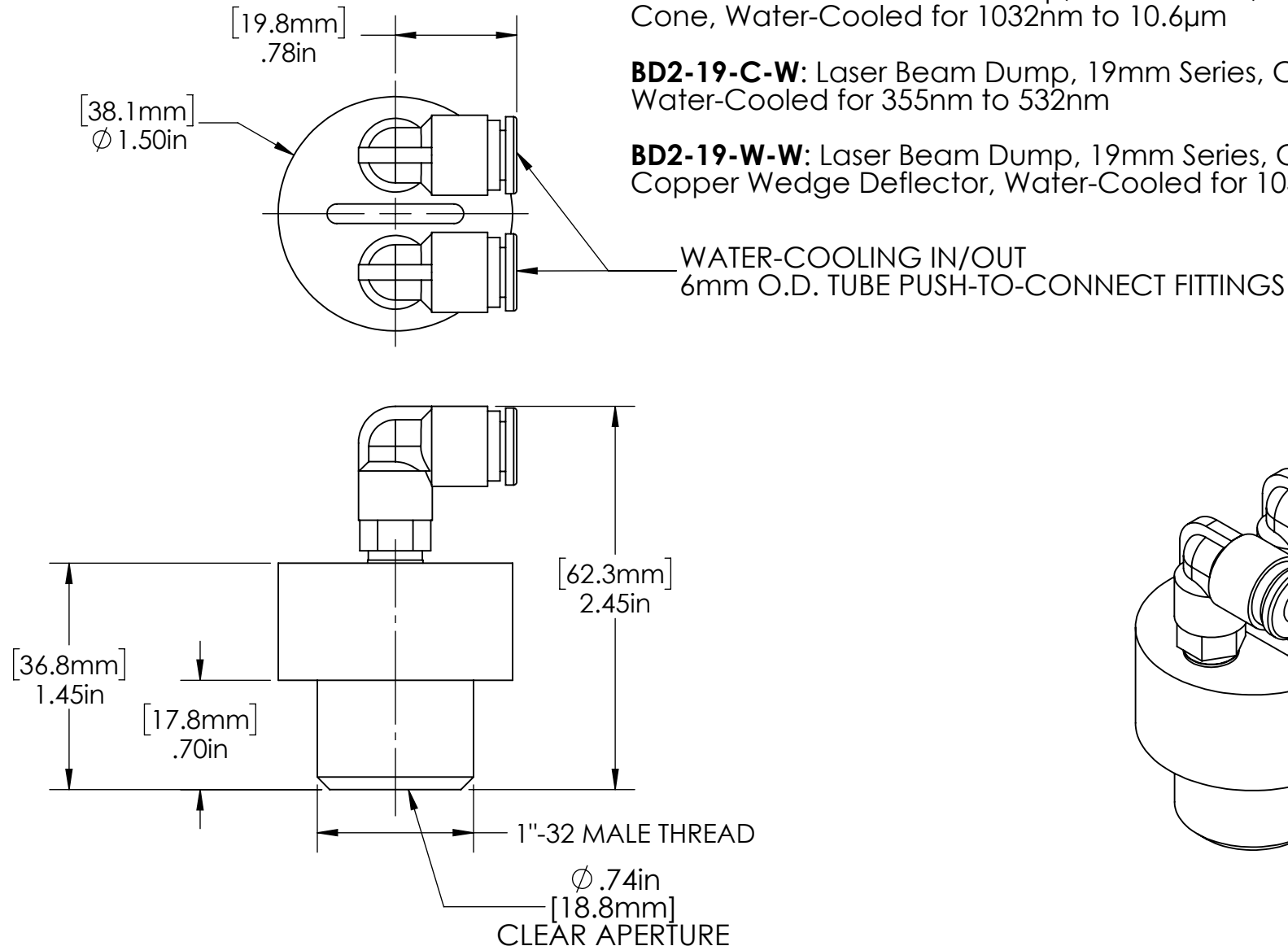


**WATER-COOLED PART NUMBER EXAMPLES:**

**BD2-19-B-W:** Laser Beam Dump, 19mm Series, Coated Brass Cone, Water-Cooled for 1032nm to 10.6µm

**BD2-19-C-W:** Laser Beam Dump, 19mm Series, Copper Cone, Water-Cooled for 355nm to 532nm

**BD2-19-W-W:** Laser Beam Dump, 19mm Series, Coated Copper Wedge Deflector, Water-Cooled for 1032nm to 10.6µm



FOR INFORMATION ONLY  
NOT FOR MANUFACTURING

DATE:  
05/03/23

DRAWN BY:  
DVH

CHK'D BY:  
GJH

TOLERANCES:  
(EXCEPT AS NOTED)

X.XXX = ± 0.005

X.XX = ± 0.01

X/X = ± 1/64

ANGULAR: ± 0.5°

REV.

DESCRIPTION

DATE

APPD



37 IRONIA ROAD  
FLANDERS NJ 07836  
(973) 598-1150  
Fax: 598-1151

HAAS DOC.# BD2-19-W-SALES

SPECIFICATIONS SUBJECT TO CHANGE WITHOUT NOTICE.  
CONTACT HAAS LTI FOR MORE INFORMATION

BD2-19  
WATER-COOLED BEAM DUMP

BOM#

SCALE: 1:1