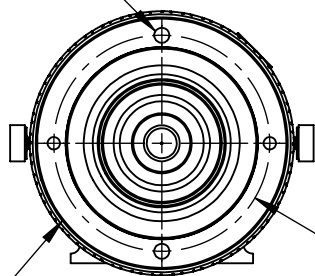
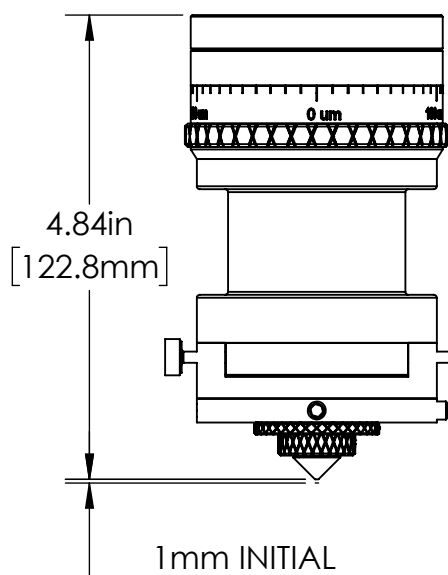
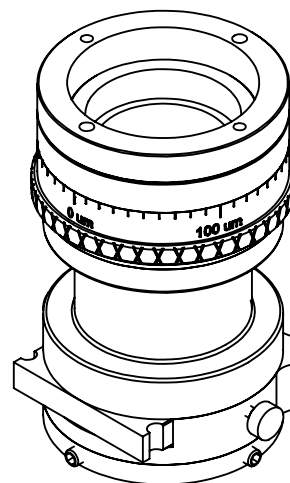


2X M3 PIN HOLE
FOR MOUNTING



$\phi 2.25\text{in}$
[57.2mm]

$2\frac{5}{8}" - 32$
THREAD FOR MOUNTING



4.84in
[122.8mm]

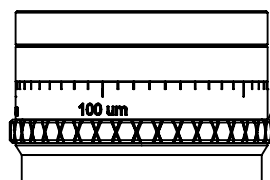
1mm INITIAL
STAND-OFF

2X COVER GLASS
CARTRIDGE
LOCK THUMB SCREWS

COVER GLASS
CARTRIDGE
 $\phi 1" \times \frac{1}{8}"$ 200 PSI MAX

2X X-Y ULTRA
PRECISION
ADJUST

FOCAL LENGTH
ADJUST
 $\pm 4\text{mm}$



$\frac{1}{8}$ NPP
FOR GAS
ASSIST

T-512 SERIES
NOZZLE TIP

FOR INFORMATION ONLY
NOT FOR MANUFACTURING

DATE:
8/1/2017

DRAWN BY:
MPM

CHK'D BY:
RS

TOLERANCES:
(EXCEPT AS NOTED)

X.XXX = ± 0.005

X.XX = ± 0.01

X X/X = $\pm 1/64$

ANGULAR: $\pm 0.5^\circ$



37 IRONIA ROAD
FLANDERS NJ 07836
(973) 598-1150
Fax: 598-1151

HAAS DOCUMENT# MMH-25-34-100-SALES

SPECIFICATION SUBJECT TO CHANGE WITHOUT NOTICE.
CONTACT HAAS LTI FOR MORE INFORMATION.

MMH-25-34-100
CUSTOMER DIMENSION DWG

BOM#
NA

SCALE: 1:1/A