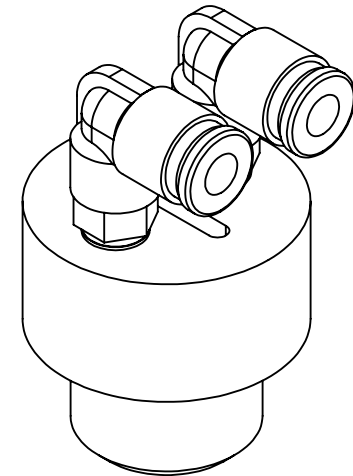
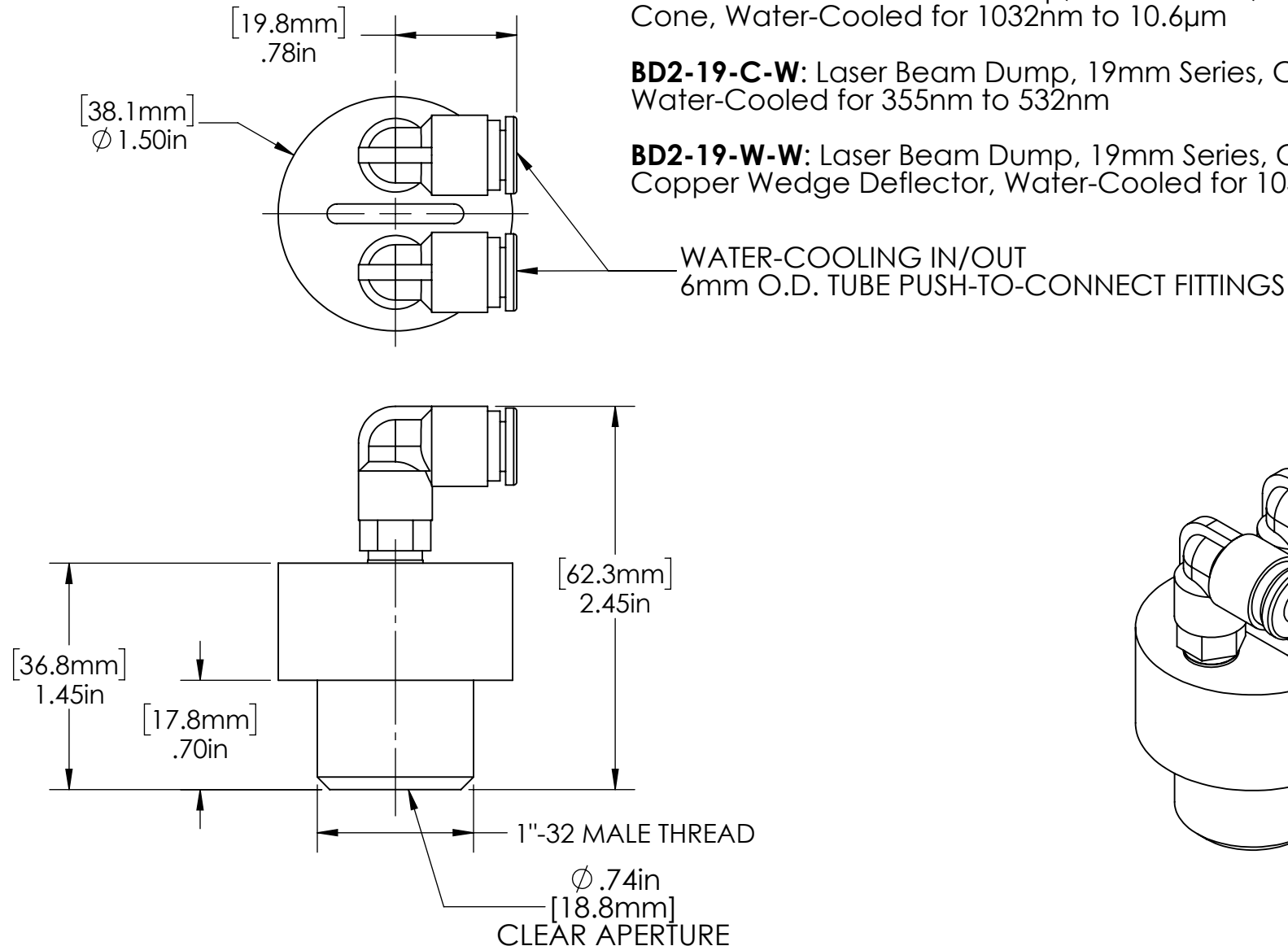



WATER-COOLED PART NUMBER EXAMPLES:

BD2-19-B-W: Laser Beam Dump, 19mm Series, Coated Brass Cone, Water-Cooled for 1032nm to 10.6µm

BD2-19-C-W: Laser Beam Dump, 19mm Series, Copper Cone, Water-Cooled for 355nm to 532nm

BD2-19-W-W: Laser Beam Dump, 19mm Series, Coated Copper Wedge Deflector, Water-Cooled for 1032nm to 10.6µm



FOR INFORMATION ONLY NOT FOR MANUFACTURING	DATE: 05/03/23	DRAWN BY: DVH	CHK'D BY: GJH	TOLERANCES: (EXCEPT AS NOTED) X.XXX= ± 0.005 X.XX= ± 0.01 X/X = ± 1/64 ANGULAR: ± 0.5°	REV.	DESCRIPTION	DATE	APPD		37 IRONIA ROAD FLANDERS NJ 07836 (973) 598-1150 Fax: 598-1151
HAAS DOC.# BD2-19-W-SALES								BD2-19 WATER-COOLED BEAM DUMP		BOM#
SPECIFICATIONS SUBJECT TO CHANGE WITHOUT NOTICE. CONTACT HAAS LTI FOR MORE INFORMATION										SCALE: 1:1