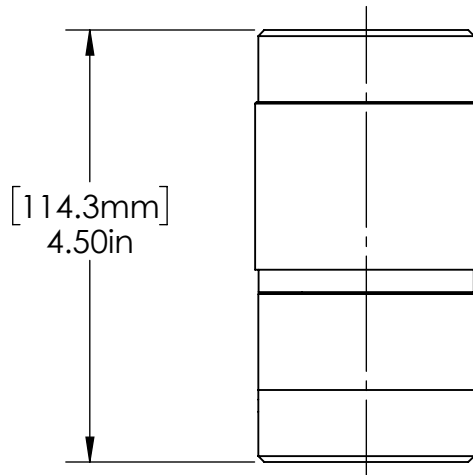
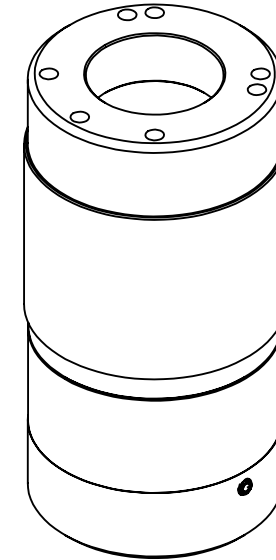


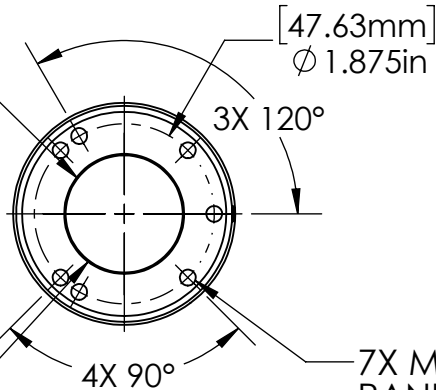
.90in [22.9mm] MAX. INPUT APERTURE

[58.75mm]
Ø 2.31in



[114.3mm]
4.50in

1-1/4"-32 INTERNAL
MOUNTING THREAD
BOTH ENDS




[47.63mm]
Ø 1.875in

3X 120°

1.22in [30.9mm]
MAX. OUTPUT APERTURE

4X 90°

7X M5 .39in [10mm] BOTH ENDS
RANDOM CLOCKING

| | | | | | | | | | | | |
|--|------------------|-----------------|------------------|---|------|-------------|------|------|---|--|------------|
| FOR INFORMATION ONLY NOT FOR MANUFACTURING | DATE: 12/2/16 | DRAWN BY: TA | CHK'D BY: GJH | TOLERANCES: (EXCEPT AS NOTED) | REV. | DESCRIPTION | DATE | APPD |  | 37 IRONIA ROAD FLANDERS NJ 07836 (973) 598-1150 Fax: 598-1151 | |
| HAAS DOC.# BEC-25-2.5-10.6-S-SALES | | | | X.XXX= ± 0.005 X.XX= ± 0.01 X/X = ± 1/64 ANGULAR: ± 0.5° | | | | | | | |
| \\haas-server\Engineering\salesengineering\TimWebsite16\25mm\BEC-25\BEC-25-2.5-10.6-S\ | | | | | | | | | BEC-25-2.5-10.6-S SHORT BODY | | BOM# |
| | | | | | | | | | | | SCALE: 1:2 |