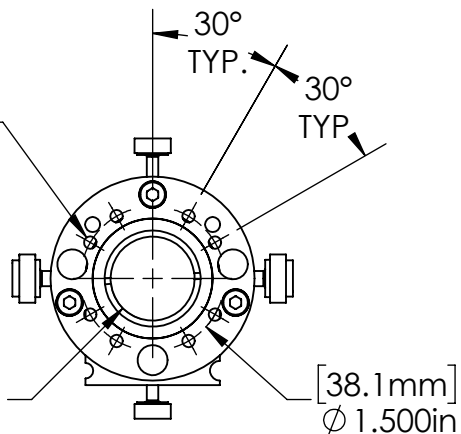


8X M4X0.7 ∇ .375"
AS SHOWN FOR MOUNTING

[22.2mm]
 ϕ .875in
MAX. INPUT C.A.



OPTIC CARTRIDGE
 ϕ 1.0" (25) OR ϕ 1.1" (28)

4X OPTIC CARTRIDGE
LOCK THUMB SCREW

[53.98mm]
 ϕ 2.125in

G1-25-B60
ADAPTER

1/8" NPT
FOR
GAS ASSIST

4X TIP X-Y
ADJUST

G1-F-5000
EXTENSION

NOZZLE TIP
ADJUST Z
LOCK COLLAR

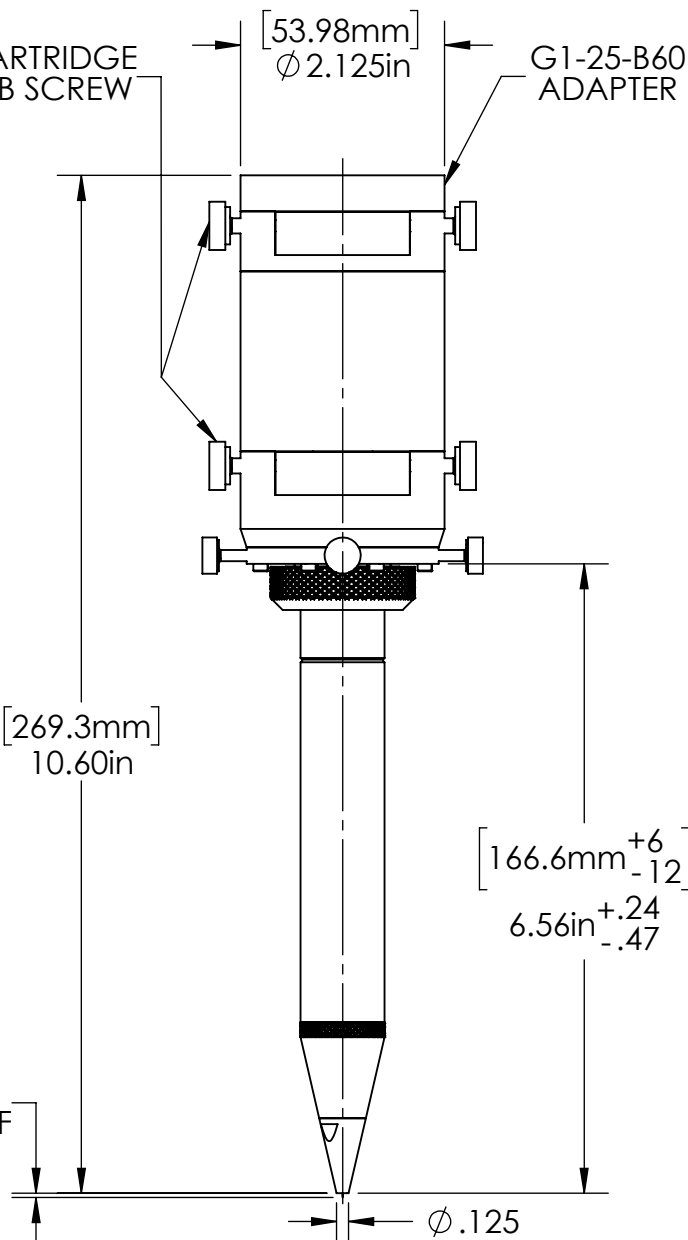
G1-25-G14
TIP HOLDER

T-438-10-H03
NOZZLE TIP STD.
(ϕ 1mm ORIFICE)

[269.3mm]
10.60in

[166.6mm⁺⁶₋₁₂]
6.56in^{+.24}_{-.47}

.039 [1mm]
TIP STAND-OFF



FOR INFORMATION ONLY
NOT FOR MANUFACTURING

DATE:
02/04/09

DRAWN BY:
RS

CHK'D BY:
GJH

TOLERANCES:
(EXCEPT AS NOTED)
X.XXX = ± 0.005

X.XX = ± 0.01

X X/X = $\pm 1/64$

ANGULAR: $\pm 0.5^\circ$



37 IRONIA ROAD
FLANDERS NJ 07836
(973) 598-1150
Fax: 598-1151

HAAS DOCUMENT# G1-25-25-191-254-SALES

SPECIFICATION SUBJECT TO CHANGE WITHOUT NOTICE.
CONTACT HAAS LTI FOR MORE INFORMATION.

G1 HEAD LAYOUT 7.5 & 10.0 EFL.
G1-25-25-191-254 & G1-25-28-191-254

BOM#
NA

SCALE: 1:1/A